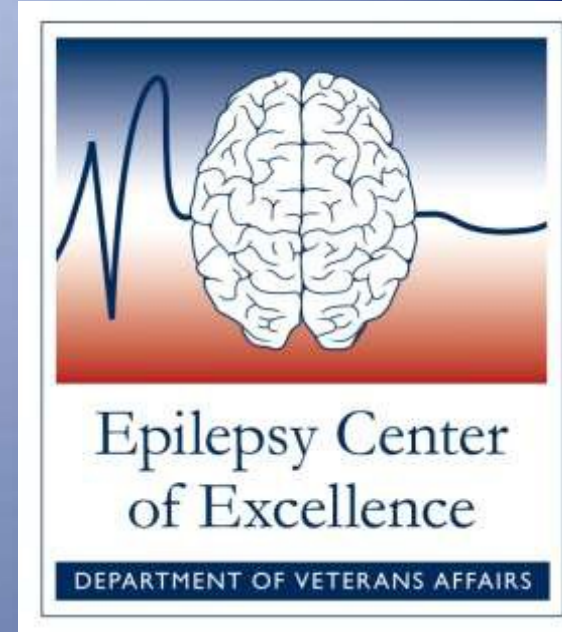


ICARE Member Report

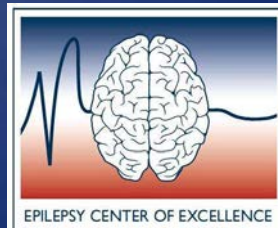
Epilepsy Center of Excellence (ECoE) Department of Veterans Affairs



Mission: Improve the health and well being of Veteran patients with epilepsy and other seizure disorders through the integration of clinical care, research and education

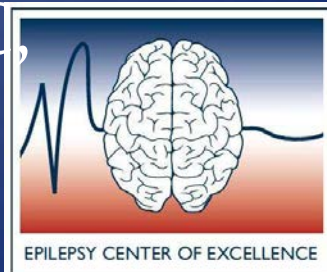
Major topics of interest in PTE epilepsy research

1. What is the risk of Mild TBI on PTE?
2. Can PTE be prevented after a TBI?
3. Does PTE after Blast injury occur analogously to other forms of PTE after TBI ?
4. How do other TBI factors (cognitive, PTSD, depression) change PTE treatment?
5. What happens with TBI and PTE as the person ages? (Vietnam/Korean War Veterans)
6. What is the relationship of psychogenic non-epileptic seizures (PNES) to TBI and PTSD?
7. What is the relationship of PTE to PTSD?
8. The treatment of PTE is difficult. What can we offer outside AEDs?
9. The VA System of Care for epilepsy is a national system. How do we make it a quality/model system?
10. What are predictors of PTE after TBI outside known risk factors?



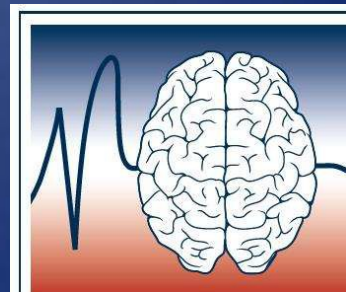
ECoE Types of research support

- Office of Research and Development
(<http://vaww.research.va.gov/funding/rfa.cfm>)
 1. Biomedical Laboratory Research
 2. Clinical Science Research
 - VA Cooperative Studies Program
 3. Health Services Research (intramural research program funding to address VA health care priorities)
 - Quality Enhancement Research Initiative-QUERI (implements research findings into routine clinical practice)
 4. Rehabilitation Research
 5. Research Career Development Awards
- External Research Support: DoD, NIH, CDC, foundations/organizations



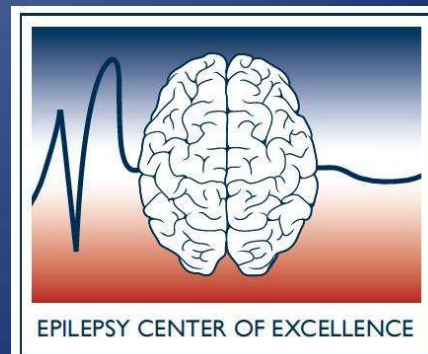
Opportunities for Collaboration

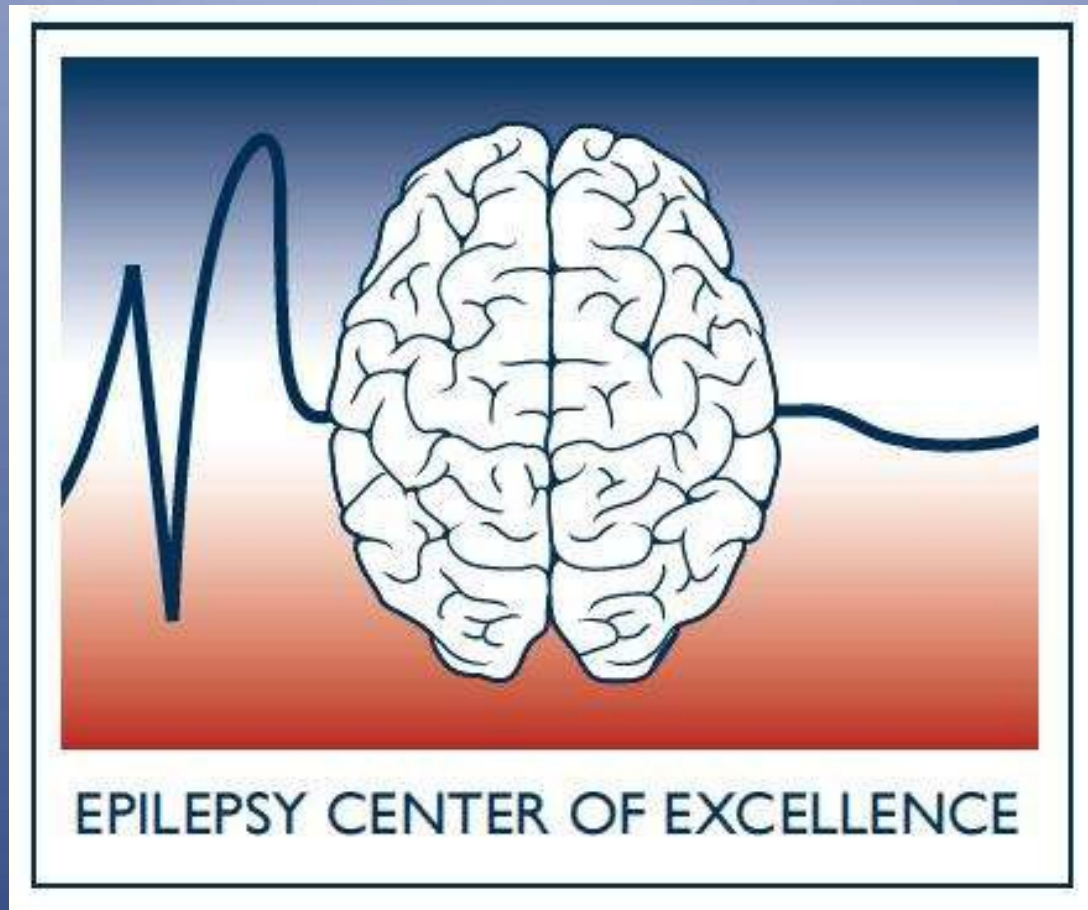
- Large integrated Electronic Health Record
- National Pharmacy Database
- ECoE Epilepsy Database with NIH CDE
- Existing Database of OEF/OIF/OND VA patients for surveillance and epidemiology
- Infrastructure to develop multi-site clinical trials
- Relationships with DoD to link with Joint Theatre Trauma Registry and Landstuhl registry
- Relationships with NIH other research groups outside of DoD and VA



Prioritized plans for future activities

- Continue Funding past September 30, 2012
- Database for studying TBI and PTE
- Cooperative studies PNES
- Clinical study with EEG monitoring for diagnosis of PTE and to better define surgical targets for PTE
- Disseminate and evaluate web-based platform
- Leverage ECoE infrastructure to develop a practice-based research network
- Conduct rapid-response quality assurance projects using clinical/admin data to improve care outcomes for Veterans





www.epilepsy.va.gov