



National Institute of  
Neurological Disorders  
and Stroke

Office of Programs to  
Enhance Neuroscience  
Workforce Diversity

# OPEN STAGE

webinar series

## **NINDS Office of Global Health and Health Disparities (OGHHD)**

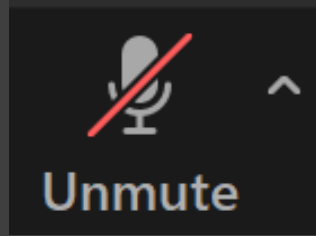
Research & Funding Opportunities

**OCTOBER 10, 2023**  
**2:00 PM - 3:00 PM EDT**

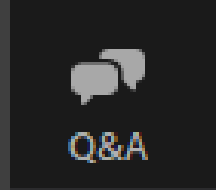
Register: <https://go.nih.gov/2XVqOfC>

# Meeting Reminders

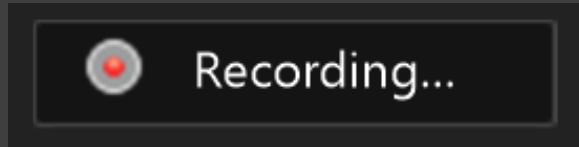
Attendees are muted



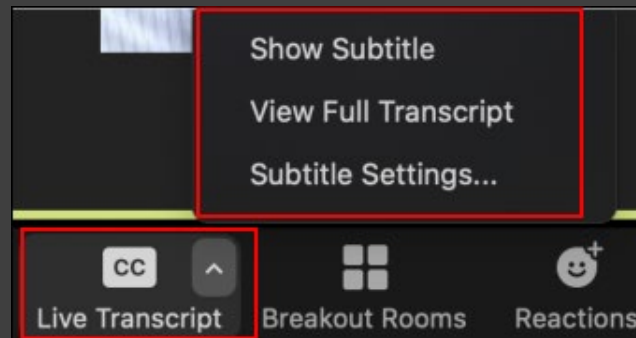
Submit questions in Q&A box



Presentation is being recorded



Live transcript available



# Stay Connected



Twitter:  
[@NINDSDiversity](https://twitter.com/NINDSDiversity)

Podcast:  
[ninds.buzzsprout.com](http://ninds.buzzsprout.com)



Listserv:  
<http://go.usa.gov/xkpN6>

Email:  
[NINDSOPENStage@ninds.nih.gov](mailto:NINDSOPENStage@ninds.nih.gov)



# NINDS OPEN STAGE Webinar Series



National Institute of  
Neurological Disorders  
and Stroke



Overview of NINDS Office of Global  
Health and Health Disparities (OGHHD)

**Research & Funding Opportunities**

**October 10, 2023  
2:00pm – 3:00pm ET**

# Office of Global Health & Health Disparities (OGHHD) | Division of Clinical Research Staff



**Richard T. Benson, M.D., Ph.D.**  
Director  
[richard.benson@nih.gov](mailto:richard.benson@nih.gov)



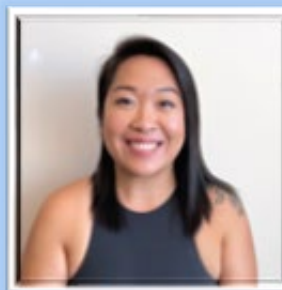
**Stacey D. Chambers, M.S.**  
Scientific Project Manager  
[chambers@ninds.nih.gov](mailto:chambers@ninds.nih.gov)



**Cheryse A. Sankar, Ph.D.**  
Program Director  
[cheryse.sankar@nih.gov](mailto:cheryse.sankar@nih.gov)



**Naomi E. Booker, M.P.H.**  
Health Program Specialist  
[naomi.booker@nih.gov](mailto:naomi.booker@nih.gov)



**Carol Kong, M.S.**  
Program Specialist  
[carol.kong@nih.gov](mailto:carol.kong@nih.gov)



**Katie Reichard, PhD**  
AAAS S&T Policy Fellow  
[kathryn.reichard@nih.gov](mailto:kathryn.reichard@nih.gov)



# NINDS Health Disparities Mission Statement



## **NINDS Health Disparities Statement:**

The NINDS is committed to reducing the disproportionate impact of neurological disease borne by underserved groups of society, including racial and ethnic minority, rural, socioeconomically disadvantaged, and disabled populations, by funding a spectrum of research from basic science through clinical studies and training the next generation of health disparities investigators.

## **OGHHD MISSION STATEMENT:**

The NINDS Office of Global Health and Health Disparities (OGHHD) leads the coordination, development, and reporting on programs and initiatives related to national and international research on disparities and inequities in neurological disease.

## ***Programmatic Activities:***

- building sustainable capacity in Low and Middle-Income Countries (LMICs) to conduct and apply research to address public health challenges associated with neurological disorders;
- supporting bilateral partnerships between the U.S. and middle-to high-income countries in research areas that are of mutual interest; and
- advancing research on tailored prevention and treatment strategies aimed at improving health outcomes in underserved and understudied populations in the US, (including racial and ethnic minority, rural, sexual gender minority, socioeconomically disadvantaged, and populations living with disabilities, through investments in research and training).

## ***Policy, Planning and Communications Activities:***

- Congressional Reporting
- Annual and triennial enrollment inclusion reports
- NIMHD Reporting
- Providing health equity and global health expertise
- Global Health and Health Disparities strategic planning



- **Goal:** Develop a comprehensive plan to guide research investments over the next 5 – 10 years
- **Components/inputs into the planning process:**
  - NANS Workgroup led by Drs. Karen Johnston and Edwin Trevathan
  - Health Equity Coordinating Committee (HECC)
  - NINDS Health Equity Workgroup (HEW)
  - Health disparities portfolio analysis
  - Request for Information (RFI)
  - Trans-NIH WG (16 ICs)
  - Literature review
  - Previous recommendations 2011
  - HEADWAY Workshop on September 22-24, 2021 (Capstone of the process)
- **Outputs/products:** Reports of the planning process, findings, and key recommendations (as approved by the NANS Council) to be widely disseminated to researchers and the public.

# NINDS Health Equity Definition

## Health Equity

Healthy People 2030 defines *health equity* as the “attainment of the highest level of health for all people. Achieving health equity requires valuing everyone equally with focused and ongoing societal efforts to address avoidable inequalities, historical and contemporary injustices, and the elimination of health and health care disparities.





The most widely read and highly cited peer-reviewed neurology journal



SUPPLEMENT

## The National Institute of Neurological Disorders and Stroke (NINDS) at the National Institutes of Health (NIH) Health Equity Research Strategic Planning Process and Recommendations

Guest Editors: Karen C. Johnston, MD, MSc and Edwin Trevathan, MD, MPH

### Executive Summary

- 51 **NINDS Health Equity Strategic Planning Process Overview, High-Level Recommendations, and Guide**

K.C. Johnston and E. Trevathan

[OPEN ACCESS](#)

### Mortality Calculation

- 59 **The Lives Lost to Inequities: Avertable Deaths From Neurologic Diseases in the Past Decade**

S.H. Woolf, D.A. Chapman, J.H. Lee, K.C. Johnston, R.T. Benson, E. Trevathan, W.R. Smith, and D.J. Gaskin

[OPEN ACCESS](#)

### NINDS Health Equity Recommendations

- 517 **Recommendations on Social Determinants of Health in Neurologic Disease**

A. Towfighi, R.P. Berger, A.M.S. Corley, M.M. Glymour, J.J. Manly, and L.E. Skolarus

[OPEN ACCESS](#)

- 527 **Use of Community-Engaged Research Approaches in Clinical Interventions for Neurologic Disorders in the United States: A Scoping Review and Future Directions for Improving Health Equity Research**

B. Boden-Albala, V. Rebello, E. Drum, D. Gutierrez, W.R. Smith, R.A. Whitmer, and D.M. Griffith

[OPEN ACCESS](#)

- 547 **Health Disparities Research Curricula and Training Development: Recommendations From a National Institute of Neurological Disorders and Stroke Workgroup**

B. Ovbiagele, L. Amezcua, S.C. Cruz-Flores, P. Griffith, G. Jean-Louis, C. Jenkins, V.J. Howard, and G. Smith-Byrd

[OPEN ACCESS](#)

- 559 **Diversity, Equity, Inclusion, and Health Inequities Training in Neurologic Disorders and Stroke: Analysis and Recommendations From the NINDS Advisory Council Working Group**

D.L. Brody, R.F. Gottesman, G. Griffin, Z.M. Khaliq, D.T. Lackland, G. Ling, and N. Mohile

[OPEN ACCESS](#)

- 567 **The Communication of Scientific Information to Scientists, Clinicians, and the Public: Recommendations for Achieving Health Equity**

A.S. Ramirez, S.M. Mohl, C. Veasley, and S.A. Sheth

[OPEN ACCESS](#)

### NINDS Health Equity Framework

- 575 **Determinants of Inequities in Neurologic Disease, Health, and Well-being: The NINDS Social Determinants of Health Framework**

D.M. Griffith, A. Towfighi, S.M. Manson, E.L. Littlejohn, and L.E. Skolarus

[OPEN ACCESS](#)

### NINDS Health Equity Portfolio Analysis

- 582 **Analysis of NINDS Health Disparities and Health Equity Research Portfolio, 2016–2020: Results and a Process for Transparency, Accuracy, and Reliability**

S. Dodson, S. Spriggs, R. Calabrese, S. Chambers, M. Matthews, C. Sankar, A. Schaefer, C. Swanson-Fischer, D. Crawford, G. Umanah, and R.T. Benson

[OPEN ACCESS](#)

### NINDS Request for Information Analysis

- 592 **Advancing Health Equity in Neurologic Disorders and Stroke: Stakeholder Insights Into Health Disparities, Research Gaps, and Potential Interventions**

E.L. Littlejohn, N.E. Booker, S. Chambers, J.A. Akinsanya, C.A. Sankar, and R.T. Benson

[OPEN ACCESS](#)



# Mortality Analysis

## The Lives Lost to Inequities

### Avertable Deaths From Neurologic Diseases in the Past Decade

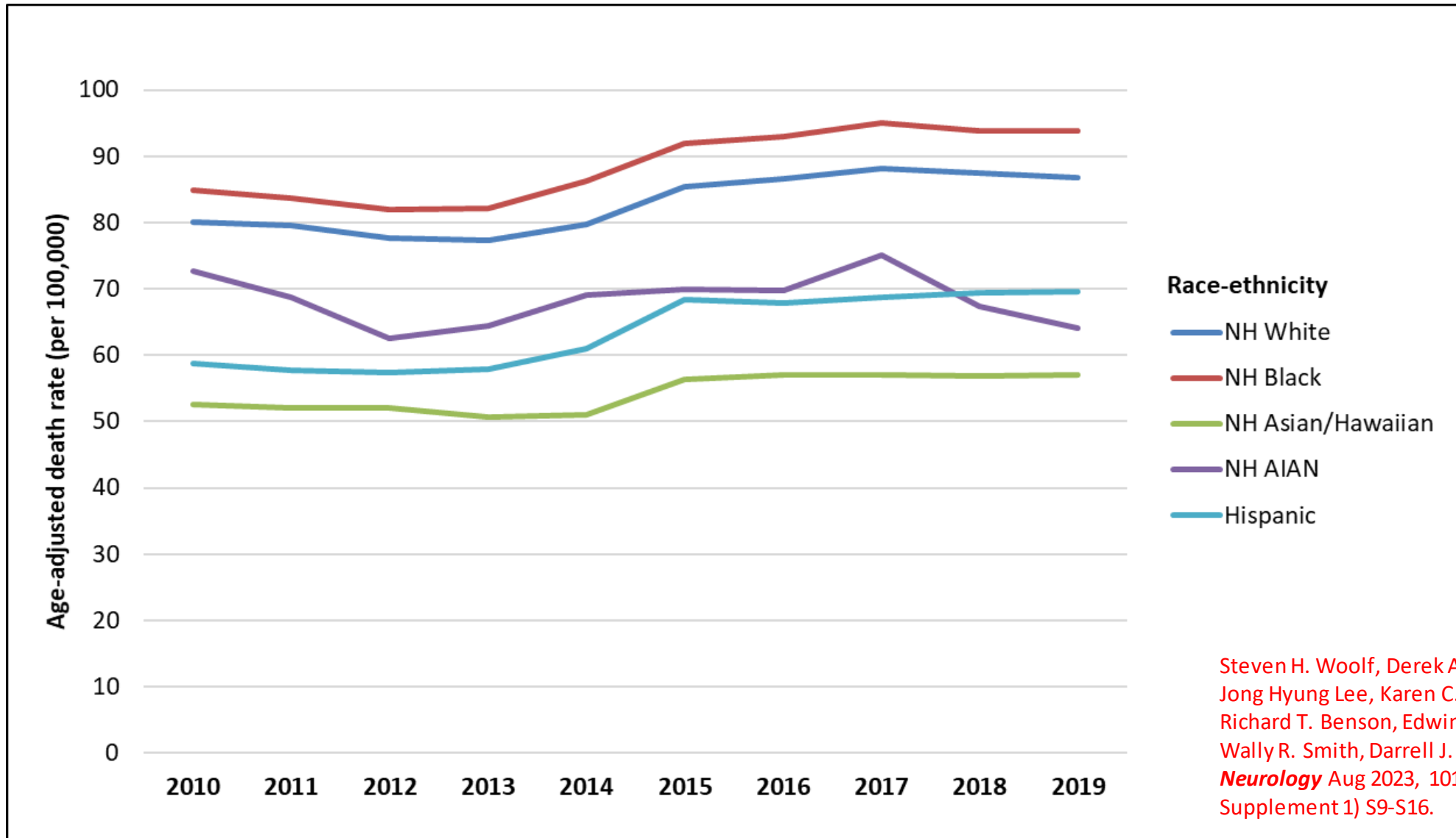
#### Methodology

- Death Counts – NCHS/CDC – 2010-2019
- Neurological Disease – ICD -10
- National Institutes of Health Research, Condition, and Disease Categorization (RCDC) system
  - Neurological Disease (e.g. ICH)
  - Potential Neurological Manifestations (e.g. HTN)
- Non-Hispanic White (NHW) - reference

Steven H. Woolf, Derek A. Chapman, Jong Hyung Lee, Karen C. Johnston, Richard T. Benson, Edwin Trevathan, Wally R. Smith, Darrell J. Gaskin. **Neurology** Aug 2023, 101 (7 Supplement 1) S9-S16.



# Age-Adjusted Mortality Neurologic Disease by Race and Ethnicity (2010-19)



Difference –  
NHB vs NHW

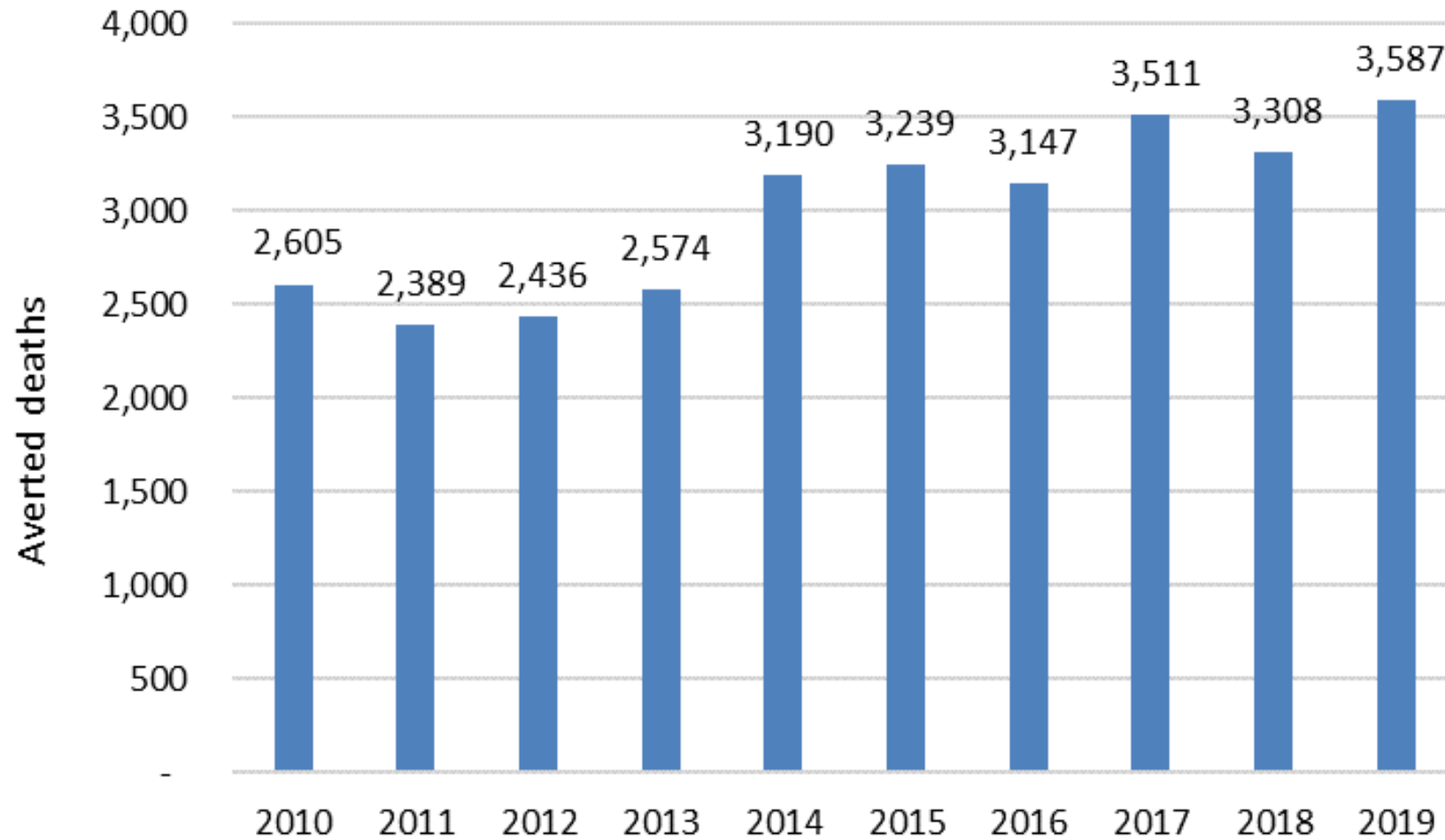
Nadir – 2011  
4.2/100,000

Peak – 2019  
7.0/100,000

Steven H. Woolf, Derek A. Chapman,  
Jong Hyung Lee, Karen C. Johnston,  
Richard T. Benson, Edwin Trevathan,  
Wally R. Smith, Darrell J. Gaskin.  
*Neurology* Aug 2023, 101 (7  
Supplement 1) S9-S16.



# Avertible Neuro Disease Deaths by Year if NHB Americans had Same Mortality Rate as NHW Americans



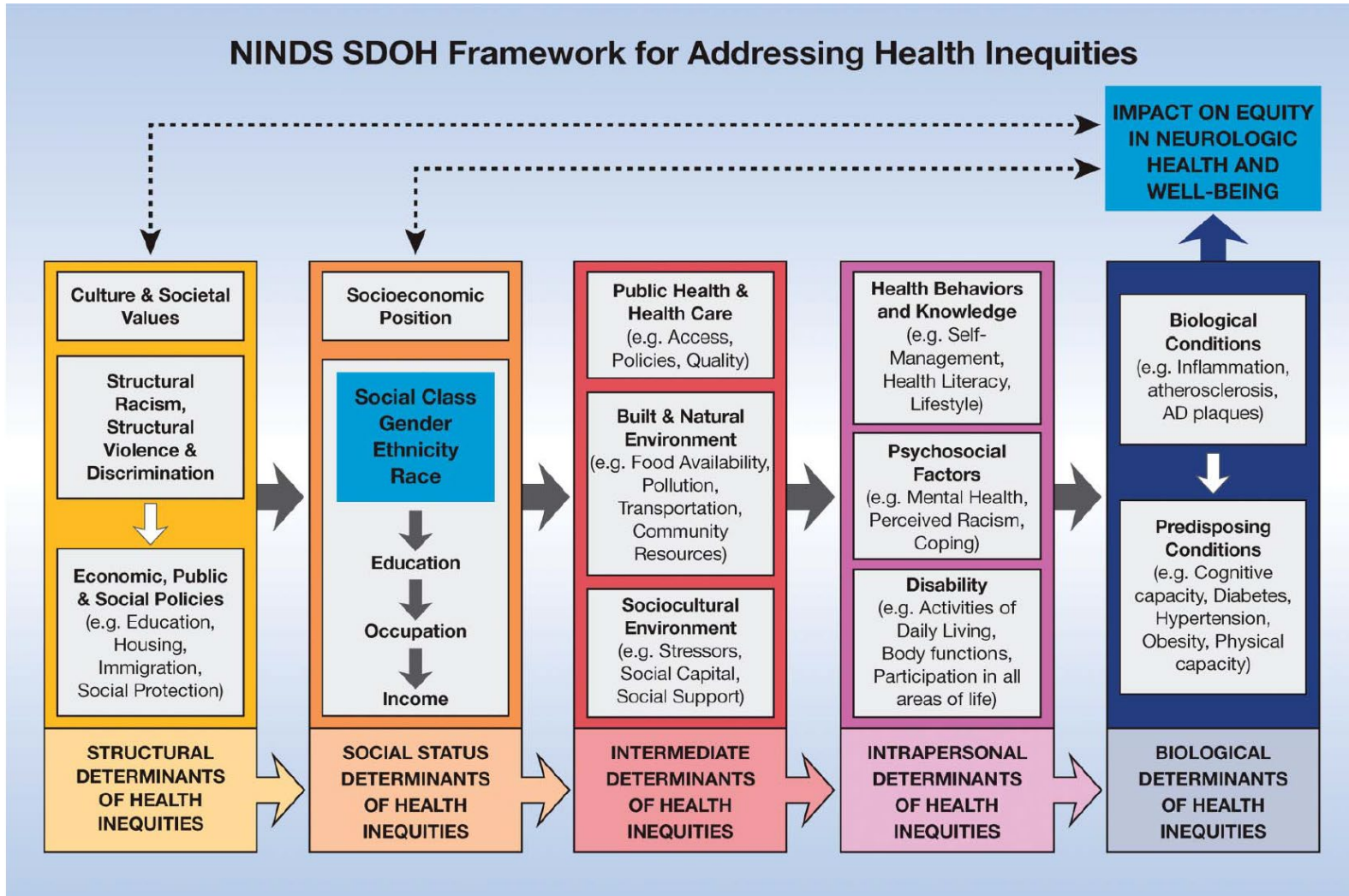
Total N=29,986

Steven H. Woolf, Derek A. Chapman, Jong Hyung Lee, Karen C. Johnston, Richard T. Benson, Edwin Trevathan, Wally R. Smith, Darrell J. Gaskin. *Neurology* Aug 2023, 101 (7 Supplement 1) S9-S16.



# NINDS SDOH Health Equity Research Framework

The NINDS Social Determinants of Health Framework for Addressing Health Inequities is a guide to improve the quality of neurological research, achieve neurologic health equity, and reach social justice.



Derek M. Griffith, Amytis Towfighi, Spero M. Manson, Erica L. Littlejohn, Lesli E. Skolarus  
*Neurology* Aug 2023, 101 (7 Supplement 1) S75-S81.





# Community-Engaged Health Equity Research in Neuroscience (HERN)



Understand specific drivers of health disparities and barriers to neurological health equity

Develop sustainable interventions to decrease disparities in neurological health among disadvantaged groups

## NIH-designated populations that experience health disparities (HDPs)

American Indians/Alaska Natives  
Asian Americans  
Blacks/African Americans  
Hispanics/Latinos  
Native Hawaiians/Pacific Islanders  
Sexual and Gender Minorities  
Socioeconomically Disadvantaged populations  
Underserved Rural populations  
**\*People Living with Disabilities**



# Community-Engaged Health Equity Research in Neuroscience (HERN) Initiative




National Institute of Neurological Disorders and Stroke


## Current Funding Opportunities Clinical Trial NOT Allowed

**HERN R34  
Planning Study  
RFA-NS-24-007**

**HERN R01  
Clinical Study  
RFA-NS-24-006**

  
(1) HDP Community Engagement  
(2) Neurological Health Equity Research  
(3) Multidisciplinary Research Teams  
Readiness

**Future Clinical Study  
and/or Trial**

  
Clinical Trial Readiness  
(1) R34 components  
(2) Tailored recruitment/retention strategies  
(3) Community-driven study design  
(4) Increasing likelihood of success

**Future Clinical Trial**





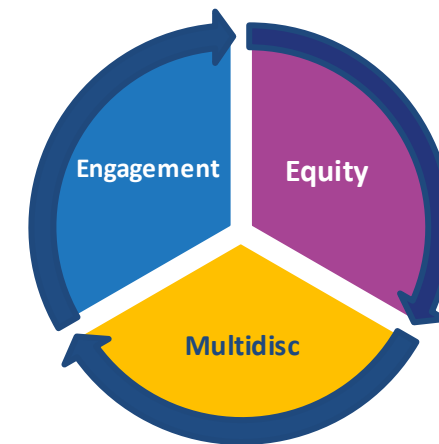
# Community-Engaged Health Equity Research in Neuroscience (HERN) Initiative

## R34 – RFA-NS-24-007 Planning 2-3yr

- ❖ Culturally-tailored approaches to **build trust** in HDP communities
- ❖ Role of **stigma, bias and/or discrimination** at multiple levels
- ❖ Identify **specific & modifiable** SDOH

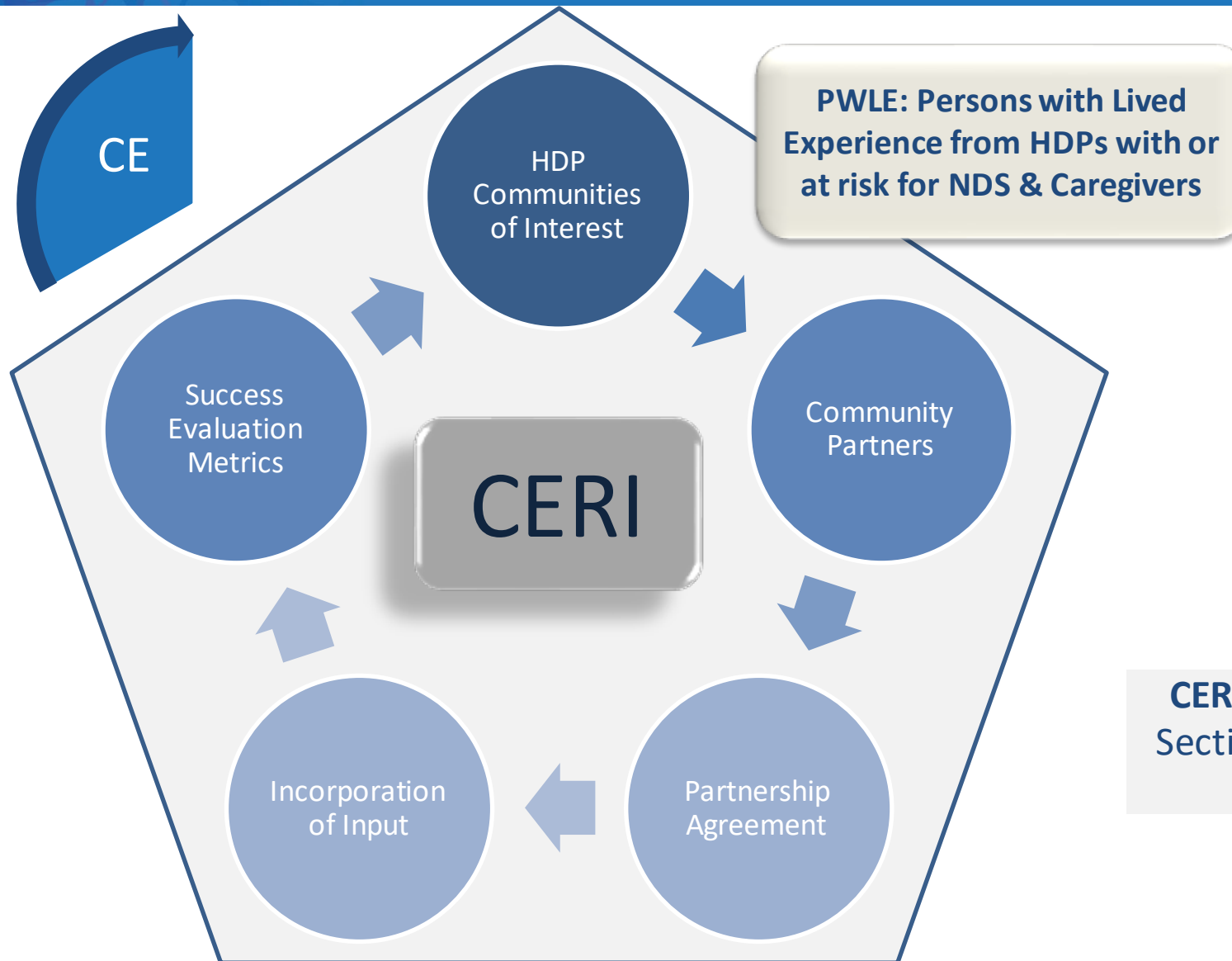
## R01 – RFA-NS-24-006 Clinical Study 5yr

- ❖ Examine Biopsychosocial Mechanisms, SDOH, ACEs as mediators
- ❖ Utilize **SDOH-informed instruments** to assess and measure SDOH
- ❖ **Establish Trial Readiness**
  - ✓ Uptake & Sustainability
  - ✓ Community-tailored adaptations





# Community Engagement & Research Inclusion (CERI) Plan



## Community Engagement

- ❖ Addresses barriers & facilitators of research participation
- ❖ Respectful, equitable and bi-directional knowledge transfer
- ❖ Builds trust

## Community-Engaged Research

Is a process that broadly implements CE principles to meaningfully involve people with lived experience (PWLE), CPs, and caregivers from research planning to dissemination

**CERI is Required** as an Other Attachment – Under Section IV: Application and Submission Information Reviewed & Evaluated



# HERN Initiative: Pre-application Technical Assistance Webinar



## Topics Covered

- R01 & R34 Background & Overview
- Non-Responsive Criteria
- Overview of Review Process
- Live Q&A

Recording and transcript available on  
NIHNINDS YouTube Channel via  
[ninds.nih.gov/HERN-initiative](https://www.ninds.nih.gov/HERN-initiative)

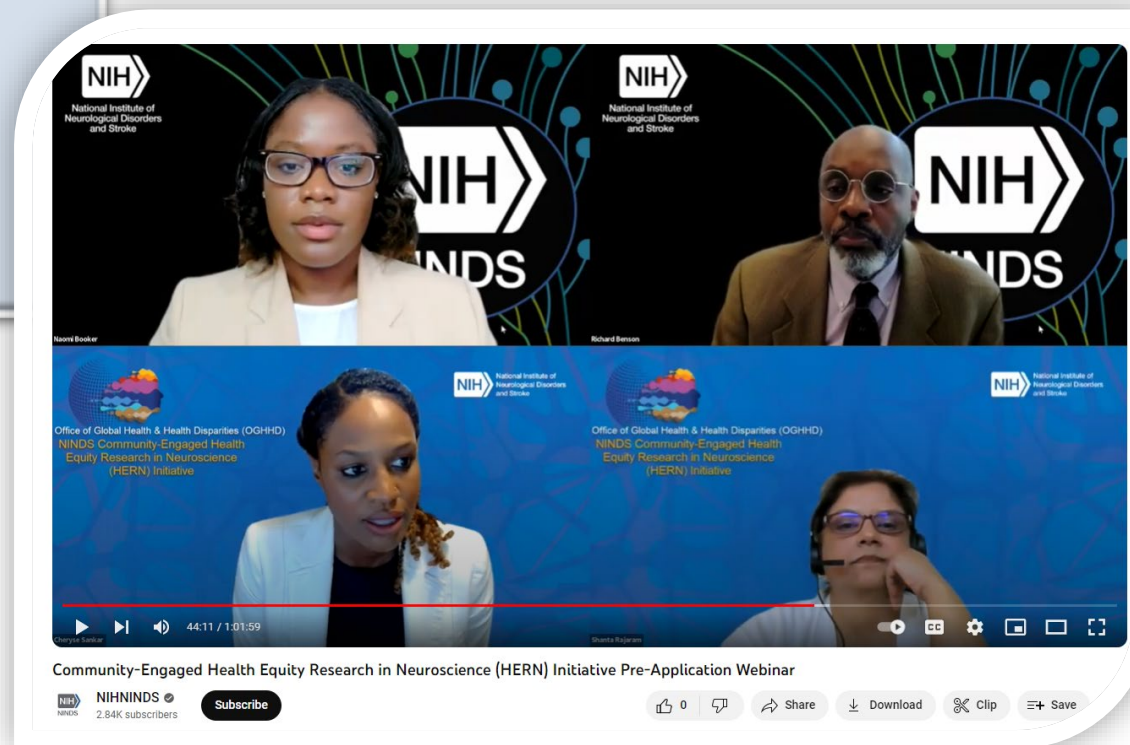
### *Speakers:*

*Cheryse A. Sankar, PhD – HERN Program Director*

*Shanta Rajaram, PhD - Acting Chief NINDS Scientific Review*

*Richard Benson, MD PhD - Director, OGHHD*

*Naomi Booker, MPH – Health Program Specialist, OGHHD*



<https://www.ninds.nih.gov/HERN-initiative>

# Build UP Trust CHALLENGE

[www.builduptrust.org](http://www.builduptrust.org)

The [National Heart, Lung, and Blood Institute](#) (NHLBI) is administering this challenge competition along with the following cosponsors from across the NIH:

[All of Us Research Program](#)

[NIH Common Fund-Community Partnerships to Advance Science for Society \(ComPASS\)](#)

[National Institute of Allergy and Infectious Diseases \(NIAID\)](#)

[National Institute of Biomedical Imaging and Bioengineering \(NIBIB\)](#)

[National Institute of Environmental Health Sciences \(NIEHS\)](#)

[National Institute of Neurological Disorders and Stroke \(NINDS\)](#)

The NIH Build UP Trust Challenge will award a total of up to **\$1.25 million** for solutions that increase research participation and the adoption of medical care by building trust and improving engagement with [minority health populations and populations with health disparities](#).



## Important dates:

- Registration deadline: **Nov 14, 2023, 5 PM ET\***
- Submission deadline: **Dec 5, 2023, 5 PM ET**

*\* Registration is required*

## Global Health Programs

- **Goals:**

**Primary:** To build sustainable capacity in Low and Middle-Income Countries (LMICs), through investments in research and training to address public health challenges associated with neurological diseases.

**Secondary:** To reduce the prevalence of neurological disorders in LMICs through the dissemination and implementation of advances in the diagnosis, treatment, and prevention of disease.

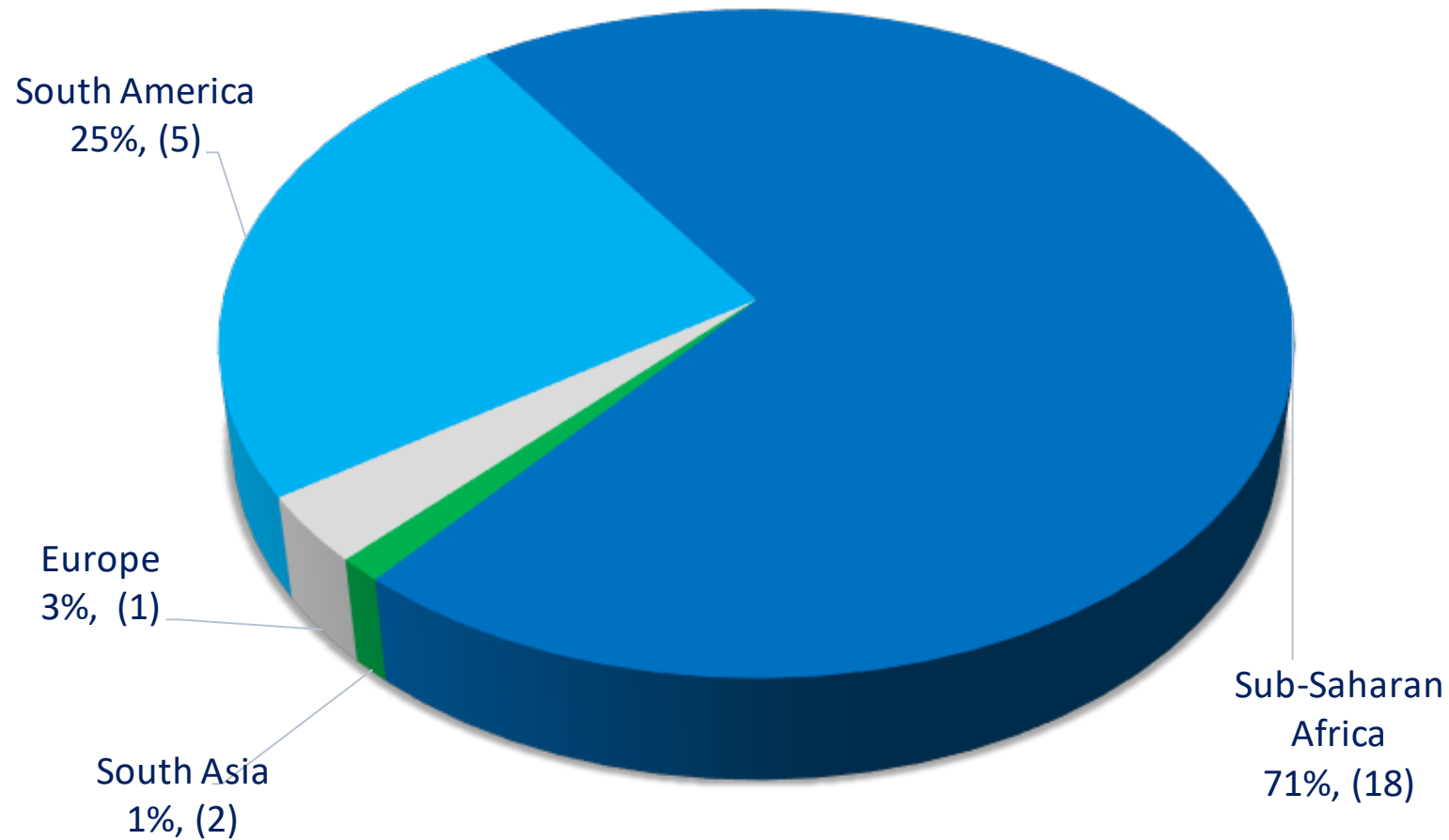
## Value gained from investing in global health research

- Inclusion of researchers with diverse perspectives
- Ability to study rare disease presentations and to conduct research in unusual environments
- Transfer of knowledge and technologies to HICs (community engagement, mHealth, task-sharing)
- Opportunities to engage large patient populations
- Awards that foster national and international interest in addressing global disease burdens among junior investigators

# NINDS Global Health Research



## FY22 Global Health Funding by Region



Total Awards: (26)





## Promoting Equity in Global Health Research

### **Request for Information on Promoting Equity in Global Health Research**



**Issued by:**

Fogarty International Center (FIC)  
National Heart, Lung, and Blood Institute (NHLBI)  
National Institute of Allergy and Infectious Diseases (NIAID)  
Eunice Kennedy Shriver National Institute of Child Health and Human Development (NICHD)  
National Institute of Environmental Health Sciences (NIEHS)  
National Institute of Mental Health (NIMH)  
National Institute of Neurological Disorders and Stroke (NINDS)  
National Cancer Institute (NCI)

**Issued by:**

Fogarty International Center (FIC)  
National Heart, Lung, and Blood Institute (NHLBI)  
National Institute of Allergy and Infectious Diseases (NIAID)  
Eunice Kennedy Shriver National Institute of Child Health and Human Development (NICHD)  
National Institute of Environmental Health Sciences (NIEHS)  
National Institute of Mental Health (NIMH)  
National Institute of Neurological Disorders and Stroke (NINDS)  
National Cancer Institute (NCI)

<https://www.fic.nih.gov/About/center-global-health-studies/Documents/nih-report-rfi-equity-global-health-research.pdf>

## Promoting Equity in Global Health Research

### **Key Thematic Areas Identified by Respondents**

- **Equitable Partnerships**
- **Funding Limitations and Structures**
- **Capacity (Scientific, Administrative, Infrastructure)**
- **Priority Setting**
- **Data Access and Ownership**
- **Peer Review**


Next Steps: Trans-NIH Workgroup to identify strategies to address identified gaps

## Bilateral Programs and Partnerships

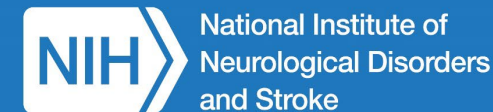
### ■ Goals:

To support novel collaborative research partnerships between the U.S. and middle- to high-income countries, in research areas that are of mutual interest to both countries.

- **U.S.-Japan Brain Research Cooperative Program (BRCP)**  
Administrative Supplements [NOT-NS-23-092] (lead IC: NINDS, 7 participating ICs)
- **U.S.-Brazil Collaborative Biomedical Research Program (R01)**  
(RFA-AI-18-054) (lead IC: NIAID, 7 participating ICs )  
\*not currently active



# U.S.-Japan Brain Research Cooperative Program (BRCP)



***NOSI: Administrative Supplements for the U.S.-Japan BRCP***

**NOT-NS-23-092**

<https://grants.nih.gov/grants/guide/notice-files/NOT-NS-23-092.html>

***Participating NIH ICs:*** NINDS, NIBIB, NIDCD, NIDA, NIEHS, NIMH, NCCIH

***Purpose:*** The U.S.-Japan Brain Research Cooperative Program (BRCP) promotes scientist exchange, training, and research collaborations between neuroscientists from the U.S. and Japan. The Program awards administrative supplements to currently active research grants that are supported by one of the participating NIH Institutes and Center. The BRCP is a bilateral partnership with the National Institute for Physiological Sciences (NIPS) in Japan.

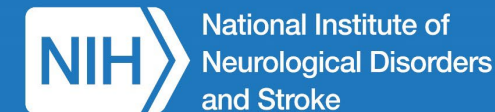
***Application Due Dates:*** September 18, 2024, September 18, 2025

***Inquiries:*** [usjapanbrcp1@ninds.nih.gov](mailto:usjapanbrcp1@ninds.nih.gov)

***Updates:*** <https://www.ninds.nih.gov/us-japan-brcp>



# U.S.-Japan Brain Research Cooperative Program (BRCP)



## **BRCP Networking Session at the 2023 Society for Neuroscience (SfN) Conference**

- Presentations of BRCP-supported research
- Networking to encouraged new collaborations
- Hybrid session that includes participants in the U.S. and Japan
- All are welcome!

**November 12, 2023, 6:30PM – 8:30PM**

Marquis Ballroom Salon 1

Marriott Marquis, Washington, D.C.



Sunday, November 12, 2023, 6:30PM – 8:30PM, ET

Marquis Ballroom Salon 1  
Marriott Marquis, Washington, D.C.



# OGHHD Supported Funding Opportunities

## *Global Health*



### Global Health Program for Fellows and Scholars /Launching Future Leaders in Global Health Research Training Program (LAUNCH) (D43)

**Goal:** support one-year mentored research training in global health at established biomedical and health research institutions and project sites in LMICs (Africa, Asia, and the Americas).

Eligible candidates include predoctoral and pre-professional trainees from the U.S. and postdoctoral and post-professional trainees from the U.S. and LMICs.

- Awards are issued to a consortia of U.S. institutions
  - Currently seven awarded consortia involving 29 U.S. institutions (Applications for new institutions/consortia are not being accepted at this time)
- **Applications for new trainees are currently being accepted** (see program website)

#### ❖ **NPGH LEADERS (D43)**

**PI: Joseph R. Zunt, MD, MPH**

- University of Washington
- University of Hawaii at Manoa
- University of Minnesota
- Indiana University

#### ❖ **UJMT LAUNCH (D43)**

**PI: Benjamin Chi, MD, MSc**

- University of North Carolina at Chapel Hill
- Johns Hopkins University
- Morehouse School of Medicine
- Tulane University

<https://www.fic.nih.gov/Programs/Pages/scholars-fellows-global-health.aspx>



# OGHHD Supported Funding Opportunities

## *Global Health*



### Global Brain and Nervous System Disorders Research Across the Lifespan (R21/R01)

**Goal:** Support collaborative research programs that contribute to the long-term goal of building sustainable research capacity to study brain and nervous system disorders, relevant to the health priorities of LMICs. The program supports:

- R21s : for the conduct of pilot studies or to gather preliminary data; develop collaborations/networks.  
[2yr awards, \$125,000 per year DC]
- R01s : established research and collaborations  
[5yr awards, budgets should reflect the needs of the project]
- **Application Receipt Dates:**
  - November 15, 2023; November 15, 2024
- Scientists at LMIC institutions may partner with scientists in the U.S. and/or at other low and middle-income country institutions
- Applicants are encouraged to consult with participating NIH Institutes or Centers while developing their applications



## OGHHD Supported Funding Opportunities – Global Health

- Global Brain and Nervous System Disorders Research Across the Lifespan (R21/R01)  
<https://www.fic.nih.gov/Programs/Pages/brain-disorders.aspx>
- Chronic, Non-Communicable Diseases and Disorders Across the Lifespan: Fogarty International Research Training Award (NCD-LIFESPAN) (D43)  
<https://www.fic.nih.gov/Programs/Pages/chronic-lifespan.aspx>
- Emerging Global Leader Award (K43)  
<https://www.fic.nih.gov/Programs/Pages/emerging-global-leader.aspx>
- Global Health Program for Fellows and Scholars /Launching Future Leaders in Global Health Research Training Program (LAUNCH) (D43)  
<https://www.fic.nih.gov/Programs/Pages/scholars-fellows-global-health.aspx>



## Global Collaborations

**NIH RECORD** HOME CURRENT ISSUE PAST ISSUES SUBSCRIBE FEEDBACK Q

March 17, 2023  
Vol. LXXV, No. 6

 [Printable PDF](#)

**IN THIS ISSUE**

- Meet More Inspiring Women Leaders at NIH
- NIH Leadership Recognizes DRS Efforts During Pandemic
- Pompano Builds New Lymph Node Models
- NINDS-FIC Team Sees 'Showcase of Amazing Neurological Research'
- NHLBI's Rodriguez Witnesses Signing of Marriage Law at White House
- Glaunsinger To Deliver Khoury Lecture, Mar. 29
- Briefs
- Milestones
- Digest

**SITE VISIT TO ZAMBIA**

### NINDS-FIC Team Sees 'Showcase of Amazing Neurological Research'

BY SHANNON E. GARNETT



# Stay Connected with us!



National Institute of  
Neurological Disorders  
and Stroke

Scan the following QR codes to browse our website for funding opportunities, contact information, and more!

*Visit our OGHHD Website*



SCAN ME

*Subscribe to the  
NINDS-OGHHD Listserv*



SCAN ME

## Join OGHHD at Upcoming Conferences:

- SACNAS National Diversity in STEM Conference | October 26-28, 2023 | Portland, OR
- Society for Neuroscience (SFN) Annual Meeting | November 11-15, 2023 | Washington, D.C.  
*\*\*\*OGHHD hosting: U.S. – Japan BRCP Networking Session (Sunday, November 12<sup>th</sup> @ 6:30pm ET)*
- American Epilepsy Society (AES) Annual Meeting | December 1-5, 2023 | Orlando, FL